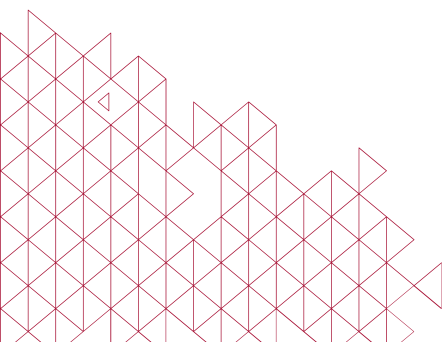




Electric Scissor Lift

How to make the best choice in 2024?





How to start when you're thinking to buy an Electric Scissor Lift ?

Electric scissor lifts might just be the game-changer you're searching for. A safe, versatile platform that not only elevates your work to new heights but does so with the simple push of a button.

- Design and Specifications
- Usage Considerations for Your Business
- Maintenance and Servicing
- Purchasing and Rental Options

With this guide, we have tried our best to help with the process and provide you with the information that can enable you to choose electric scissor lift as per your unique requirements.



Liftwise

4 Steps

To Choose an Electric Scissor Lift

Design Specifications

Firstly Know your core reasons to have Electric Scissor Lift, is it worth it or not?

Usage Considerations For Your Business

Selecting the right scissor lift for your project requires understanding the specific needs of your work environment

Maintenance and Servicing

Regularly scheduled services, performed by qualified technicians, will keep your machine running smoothly a

Purchasing and Rental Options

Each option comes with its own implications for productivity and cost-efficiency.





Design And Specifications

Owning an electric scissor lift can be a significant investment. It's essential to assess if the frequency of use will justify the purchase.



Capacity and Dimensions

Electric scissor lifts excel in balancing lifting capacity and platform workspace, serving diverse materials handling tasks indoors and outdoors, with heights reaching up to 13.7 meters (45ft)



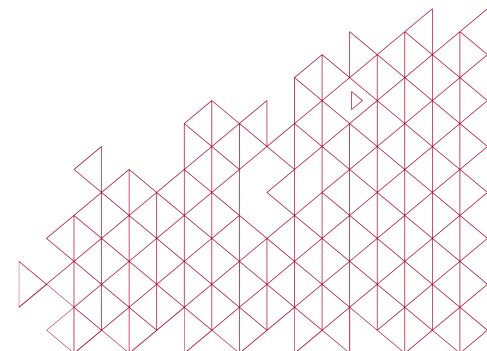
Power and Efficiency

Electric scissor lifts, ensure efficiency and minimal maintenance through recharging between uses, with specific models emphasizing extended battery life to align with sustainability goals in scheduled services..



Operational Characteristics

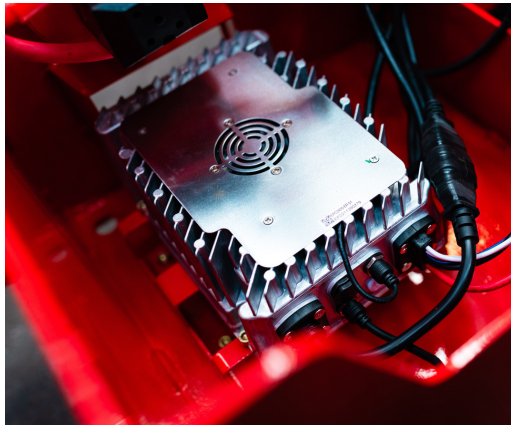
Rough terrain scissor lifts exhibit versatility across challenging job sites, featuring tailored performance attributes like speed and gradeability to navigate various conditions efficiently



Electric Scissor Lift Usage Considerations

Which is Better Scissor Lift OR HYDRAULIC LIFT?

- Electric scissor lifts are ideal for indoor use due to their quiet operation
- Hydraulic scissor lifts on hydraulic oils, which can be a concern in a quieter work area.



Can you use a scissor lift inside a warehouse?

A Scissor lift can be used inside a warehouse, particularly if it's compact and electric

What Size Scissor Lift do I need?

Common sizes include 19ft, 26ft, 32ft, and up to 39ft.



Which scissor lift model is best for me?

A model with sufficient platform workspace and appropriate weight capacity that adheres to safety standards is crucial.





Maintenance and Servicing

How to Maintain the Electric Scissor Lift?



Proper maintenance and servicing of your electric scissor lift are essential to ensure optimal uptime and safe operation. Regularly scheduled services, performed by qualified technicians, will keep your machine running smoothly and help prevent unexpected breakdowns

There are **3 factors** that will ultimately increase the longevity of your lift

1

Daily Checks

2

Scheduled Services

3

Expert Assistance

Regular maintenance not only prolongs the life of your electric scissor lift but also maintains its resale value. For any enquiries or to schedule a service, feel free to [contact us at 02 7209 0601](tel:0272090601)



Buying New vs Used Electric Scissor Lift

Which Scissor Lift should you prefer?

Owning an electric scissor lift can be a significant investment. It's essential to assess if the frequency of use will justify the purchase. A new scissor lift can enhance your productivity with a reliable and efficient work platform for various tasks. Comparing new and used options is crucial to balance initial cost with long-term value:

There are **some factors** that will ultimately affect the scissor lift

1 Buying New

- You get the latest technology and maximal efficiency.
- Manufacturer's warranty and scheduled services may be included.

2 Buying Used

- More affordable upfront cost.
- Potentially higher maintenance due to previous use.



Buying vs Renting Electric Scissor Lift

Consider your project timeline and frequency before making a decision. When selecting electric scissor lifts, you'll find options suitable for both indoor and outdoor use. For indoor applications, slab scissor lifts are well-suited with their compact dimensions.

There are **some factors** to consider whether to buy or rent the scissor lift

1 Buying

- Ideal for long-term, frequent use across multiple projects.
- Adds an asset to your company, but requires scheduled services and possible storage.

2 Renting

- Suitable for short-term or one-off projects.
- Avoids the long-term commitment and maintenance associated with ownership.





Consult with our experts & have an amazing Scissor Lift experience

When you are not sure where to start ! Want to know if a scissor lift is feasible? Our easy-to-follow free Consultation session will help you choose a lift that will work best with your home design and budget.

Start your journey with Liftwise today.

1. Speak with a knowledgeable expert
2. Enjoy a seamless & stress-free process
3. Visit Australia's most immersive lift showroom
4. Get the most out of your lift with a 30+ year lifespan
5. Peace of mind your entire project is managed for you






So, Who we are to guide you !!

At Liftwise, our office and warehouse are located in NSW, but our delivery capabilities extend across Australia

**Level 5 20 Bond Street
Sydney NSW 2000**

 [**info@liftwise.com.au**](mailto:info@liftwise.com.au)

 [**02 7209 0601**](tel:0272090601)

